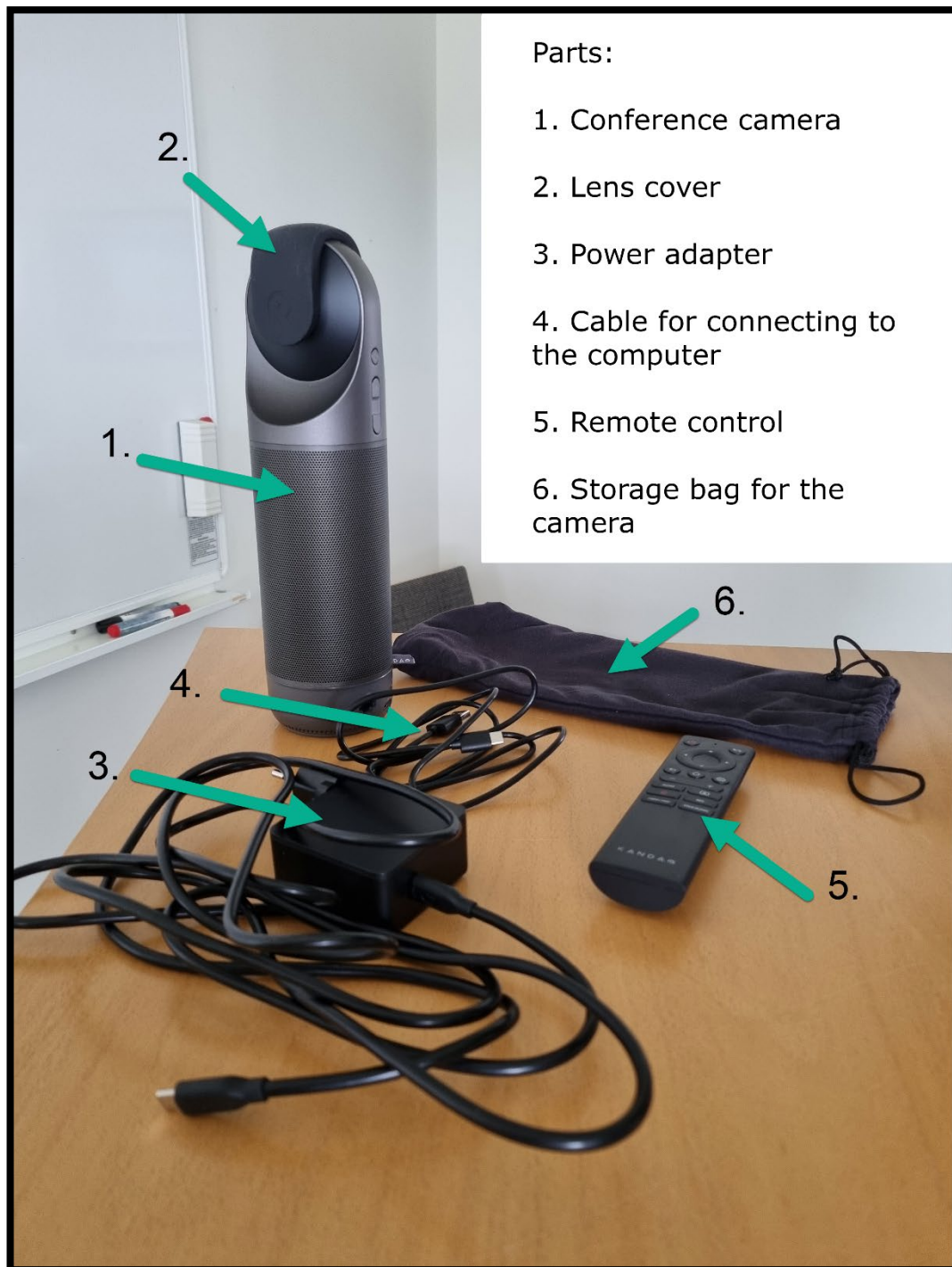


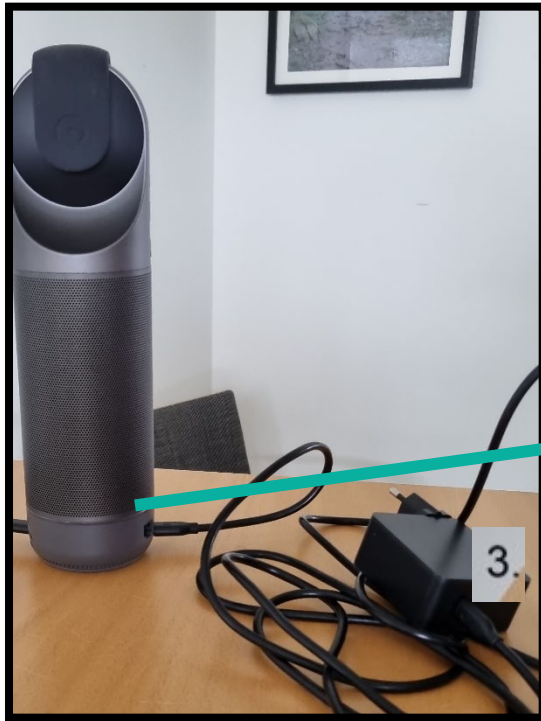


Guide to the Kandao Conference Camera



Unpack all the parts.

Place the Kandao camera in an up-right position on a table. Connect the power adapter (nr 3) to the correct port (se image below).



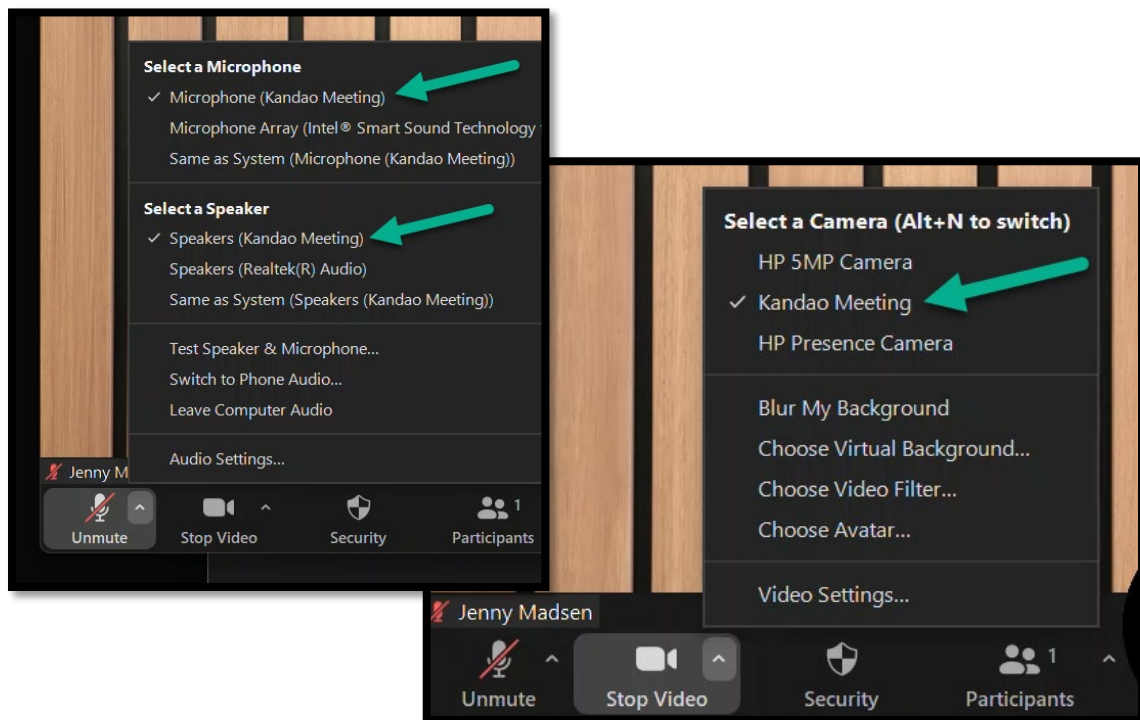
Thereafter connect the cable for the computer (nr 4) to the port on the other side of the camera.



Plug in the power adapter to a wall socket and connect the other cable (nr 4) to a USB-port on your computer.

Turn on the camera by pressing and holding the on/off button for about a second. The camera starts blinking with a green light and when the camera is ready the light shines with a steady glow.

Open Zoom (or any other app for video meetings) and start a meeting. Press the arrow beside the microphone icon in Zoom and check that Kandao meeting is chosen for both microphone and speaker. Then press the arrow beside the video icon and do the same.

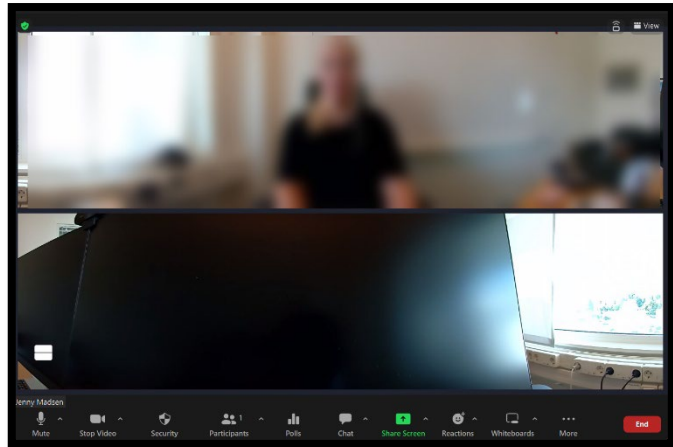


The camera will now glow with a blue light and the camera view in Zoom should come from the Kandao camera. If this is the case all is set and you can continue with your meeting.

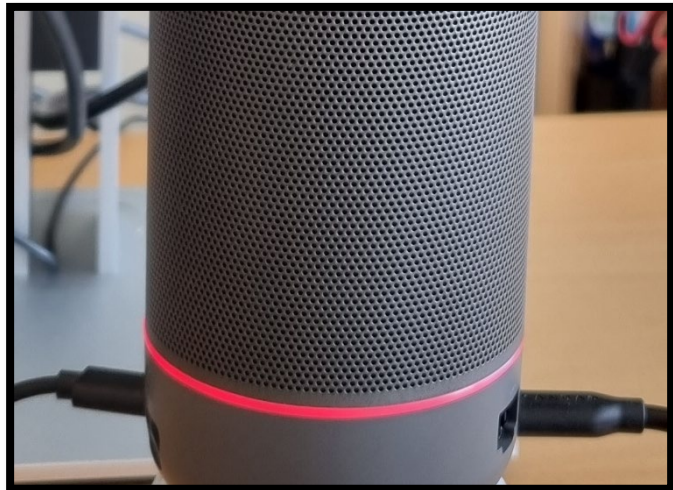
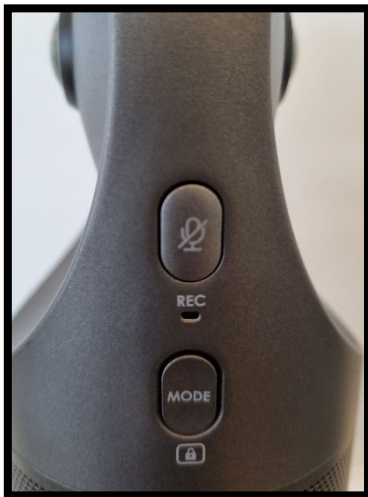
(Note: If you have a virtual background in Zoom you must turn it off.)

When the meeting is over and you want to turn off the Kandao camera press and hold the on/off button for about 3 sec. The light will stop glowing when it is turned off.

Good luck!



A tip! If you have your microphone turned on in zoom you can turn off and on the microphone via the button on the Kandao camera and on the remote. This way the camera will shine with a red light when the microphone is turned off. Others in the room can see when the microphone is turned off and they also have access to the on/off button.



Extra views: The Kandao camera has five different camera views you can choose between. You can access these through the Mode button on the camera (see image above) or on the remote. The different views available are illustrated with the icons below. Press the Mode button repeatedly to see the different views or to get back to the starting position.

